

# **Stamford Business Questionnaire Analysis**

---

**October 2003**

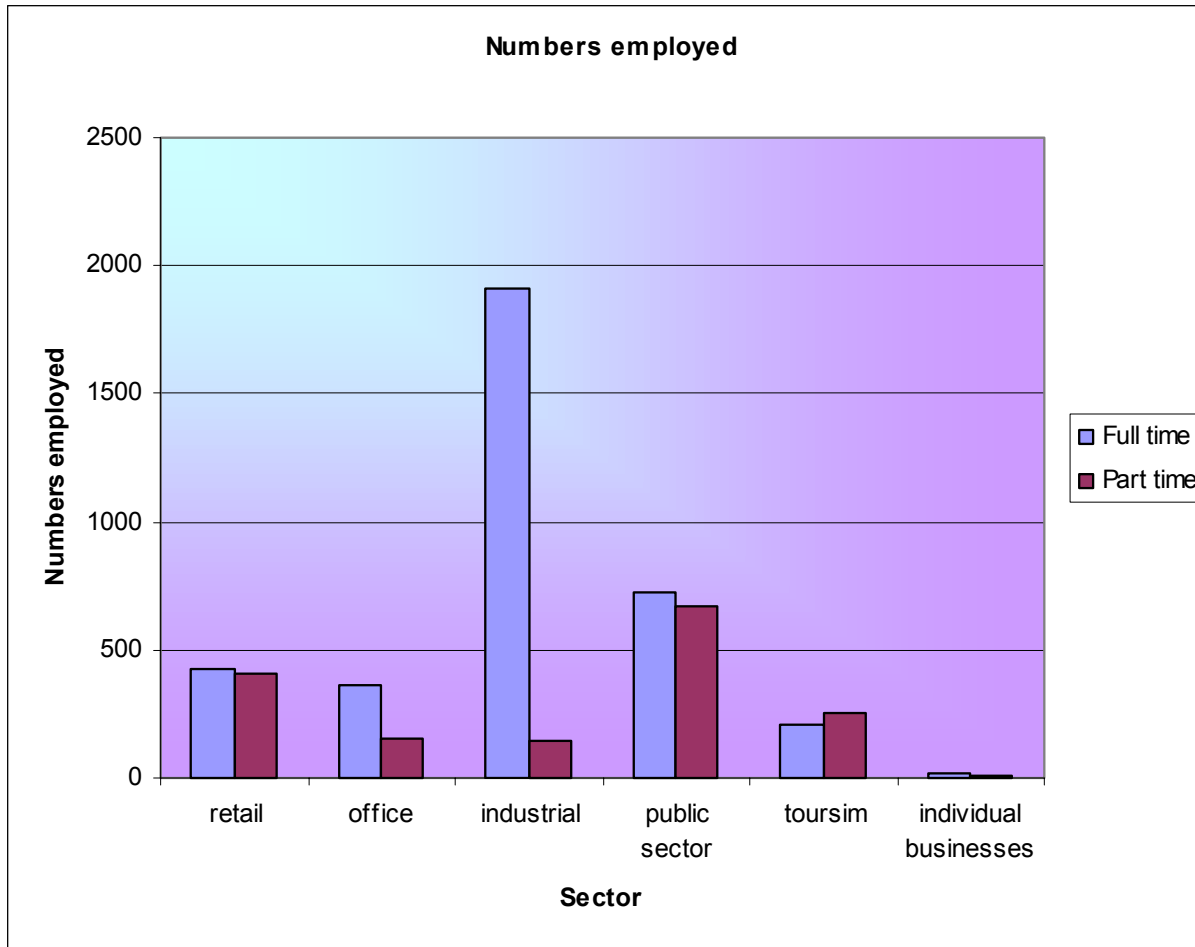


### Respondent type



There were 252 replies, each representing a separate business or employer. Response rates varied from 30 to 55% of the total surveyed, depending on sector.

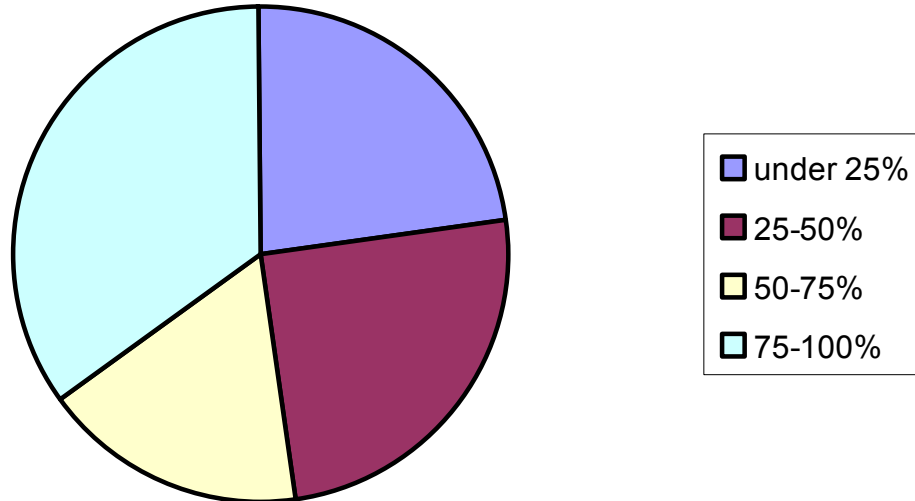




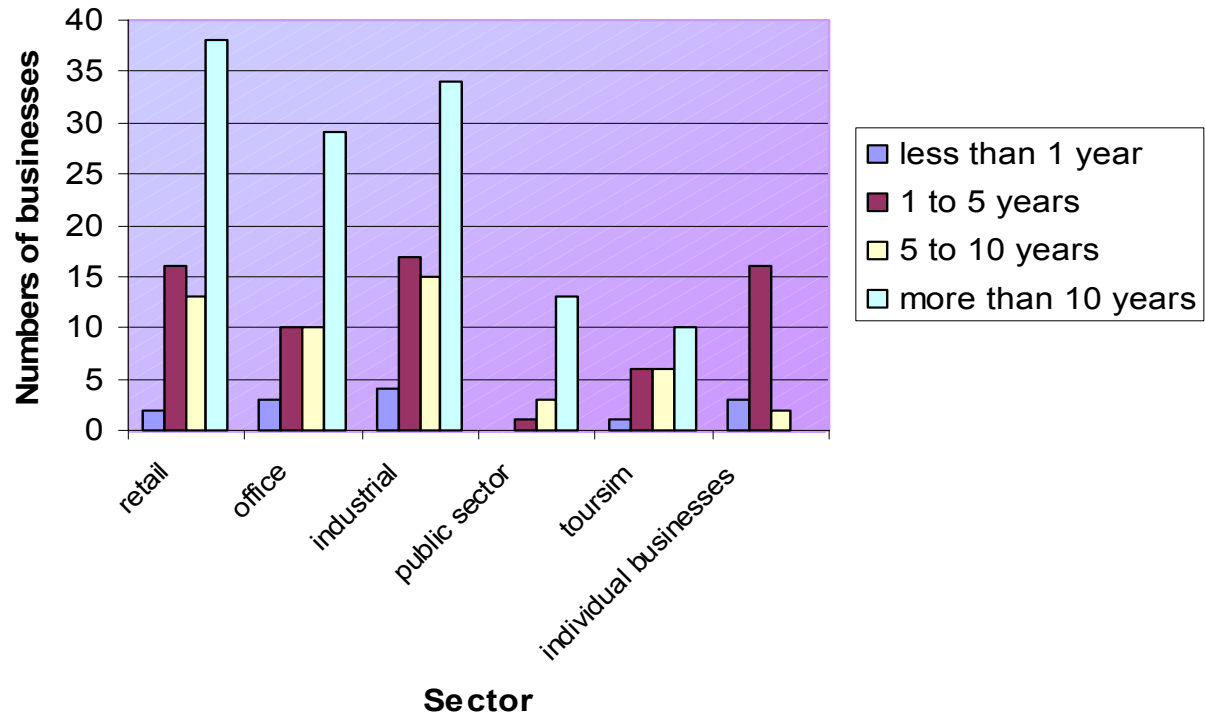
There were 5284 jobs represented by the organisations who replied. Full time jobs account for almost 70% of the total.



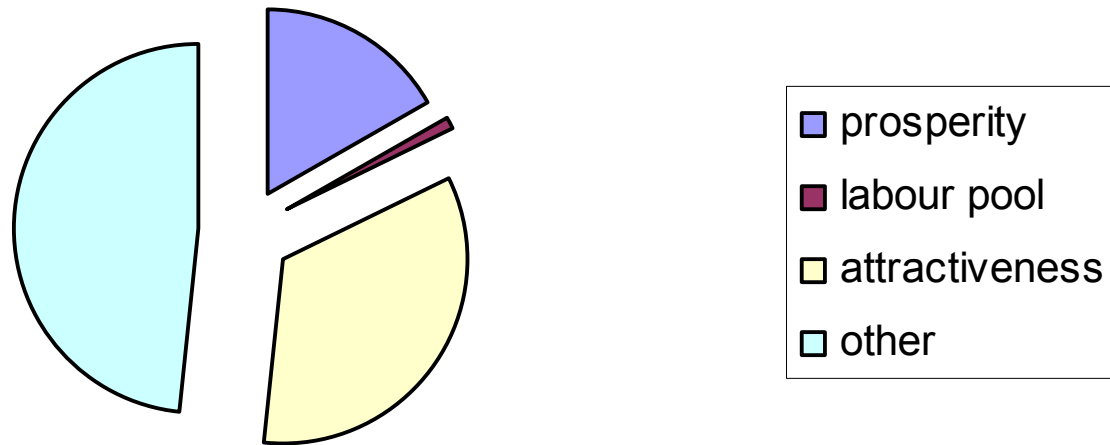
## Percentage of employees who live in Stamford - all sectors



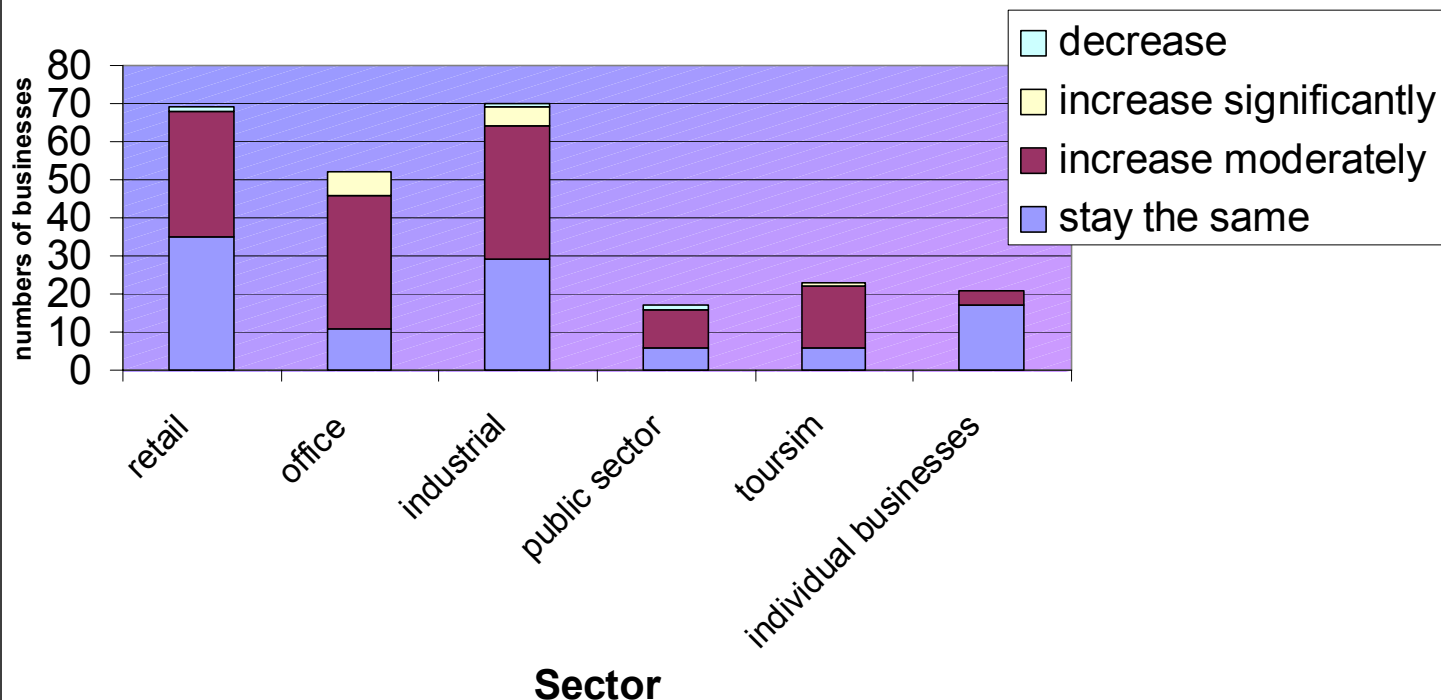
### How long has the business been in Stamford



## What attracted the company to Stamford



## How will staff numbers change in the next 5 years

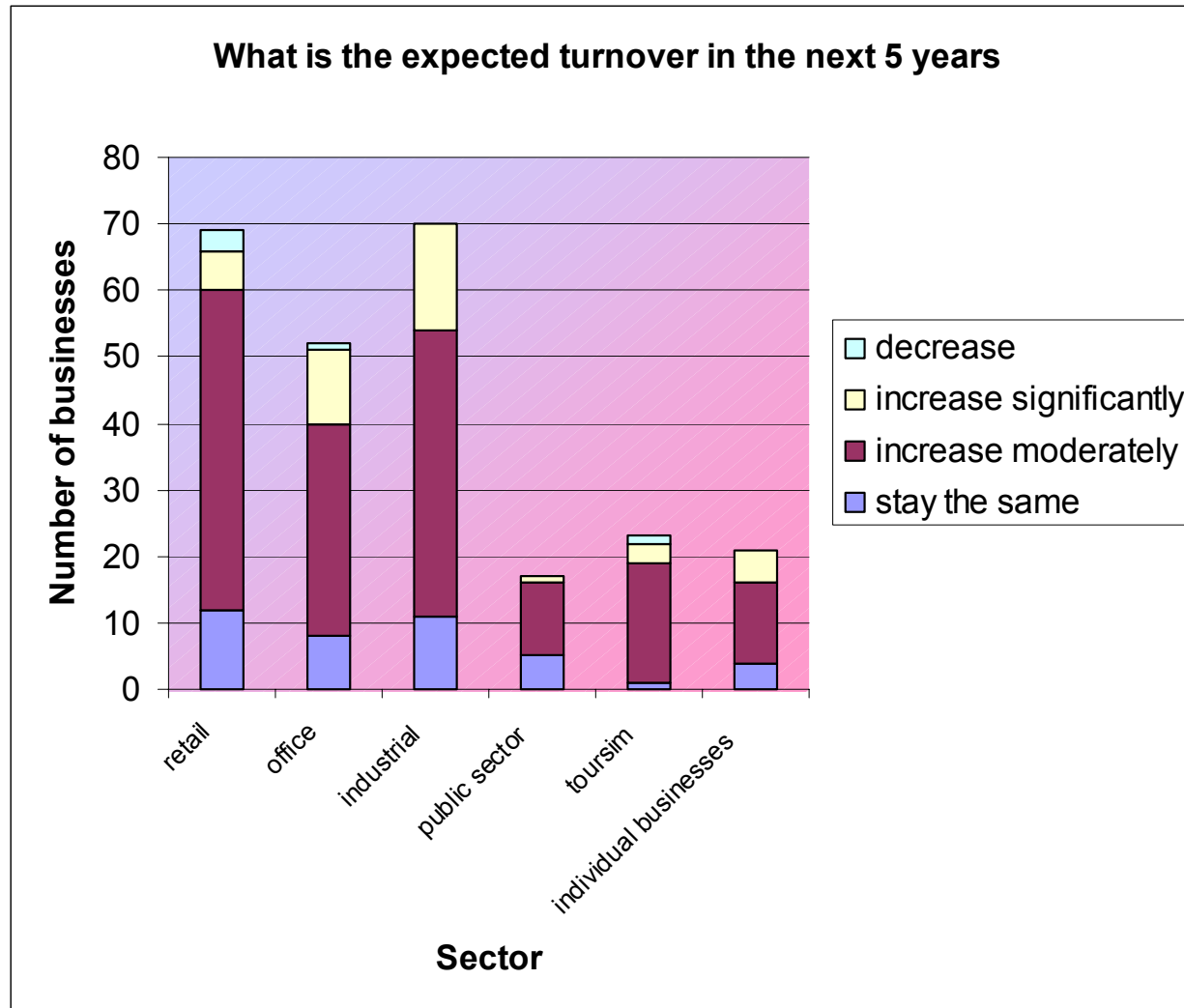


If every organisation that is forecasting increased staff numbers takes on only one person this is a growth of 145 jobs in the town or 29 jobs a year.

**VISION**  
2015



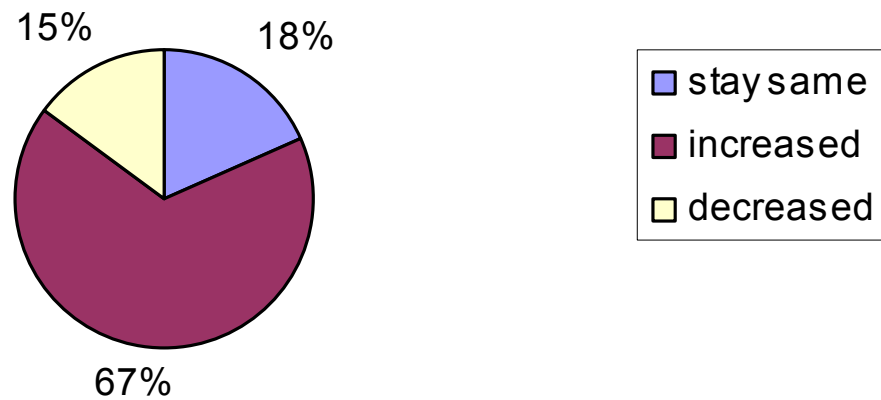
Over 80% of businesses anticipate increased turnover in the future with less than 2% forecasting a decrease.



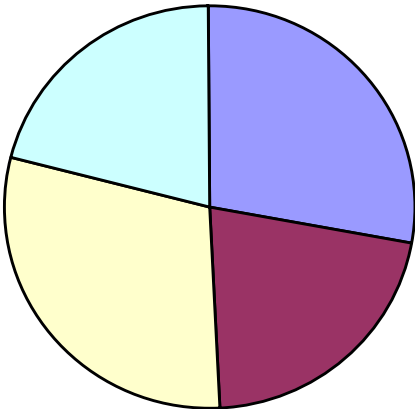
**VISION**  
2015



## Turnover of all businesses compared to the previous year



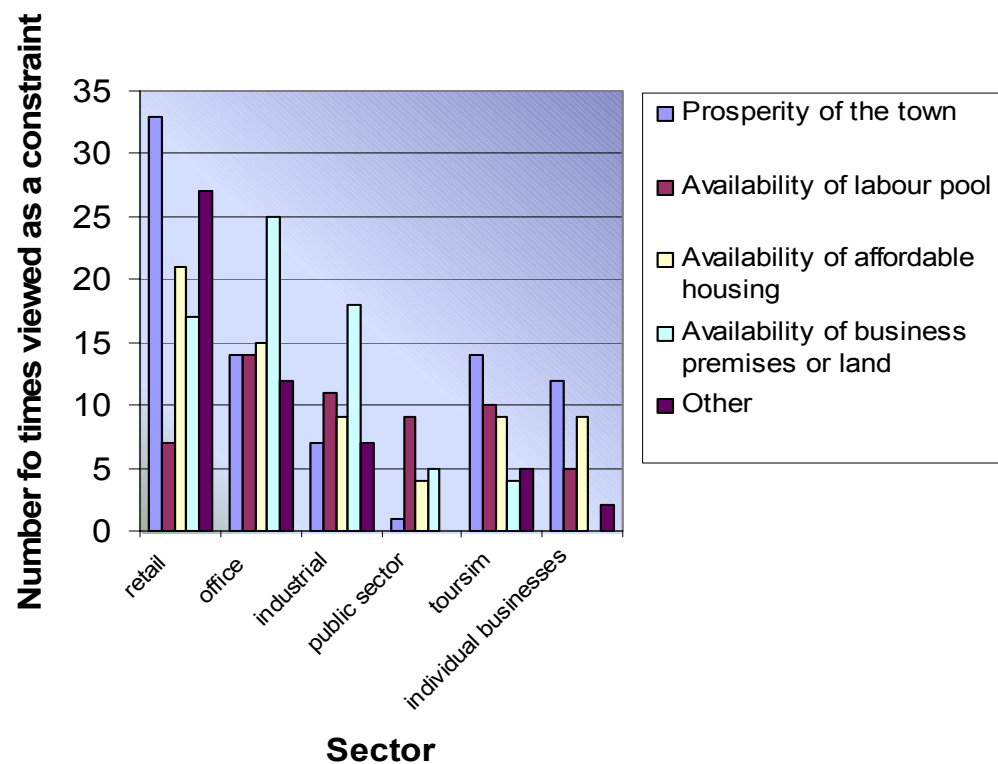
**What percentage of customers come from Stamford  
and the immediate area**



- under 25%
- 25-50%
- 50-75%
- 75-100%



## What are the constraints on future business performance



## Conclusions

---

- The overall picture is of a prosperous town where most businesses anticipate a positive future.
- The town has a mixed economy. There is a spread of employment opportunities, still with a lot of jobs in the traditional industries.
- The prosperity of the town is obviously a key factor for future growth, as is its attractiveness and other environmental issues. Of particular concern to the office and industrial sectors is the availability of land or premises.

